

# City of Brisbane

## Agenda Report

**TO:** Honorable Mayor and City Council

**FROM:** Karen Kinser, Senior Civil Engineer

**VIA:** Randy Breault, Director of Public Works/City Engineer and City Manager

**DATE:** Meeting of June 17, 2013

**SUBJECT:** Public Hearing on Imposition of Fiscal Year 2013-2014 Tax Roll Charges for the Sierra Point Landscaping and Lighting District

### **City Council Goals:**

To provide for effective and efficient delivery of City Services (1)

To maintain and improve infrastructure (3)

To develop management and fiscal systems to maximize effectiveness of City services and accountability to Brisbane taxpayers and citizens (11)

### **Purpose:**

To complete the process via a public hearing for the imposition of annual tax roll charges that fund Sierra Point's Landscape and Lighting Assessment District, which provides for maintenance of the landscaping, irrigation and lighting installed in 1989.

### **Recommendation: The following procedures and actions are recommended:**

1. Statement of the Engineer of Record as to the nature of the project.
2. Mayor's statement and declaration that the Public Hearing is open (see Attachment A).
3. Statement by the City Clerk verifying that the Certificate of Posting and the Resolution of Intention is on file (see Attachment B), followed by the reading of any written protests by the City Clerk.
4. Hearing of oral testimony and comments.
5. Closure of Public Hearing.
6. By motion, adoption of Resolution No. 2013-18, Overruling Protests and Ordering the Improvements and Confirming the Diagram and Assessment for Fiscal Year 2013-2014 for the Sierra Point Landscaping and Lighting District.

### **Background:**

At its June 3rd meeting, the City Council adopted Resolution No. 2013-16, a Resolution of Preliminary Approval of Engineer's Report, and Resolution No. 2013-17, a Resolution of Intention to Order the Levy and Collection of Assessments Pursuant to the Landscaping and Lighting Act of 1972, pertaining to the Sierra Point Landscaping and Lighting District, Fiscal Year 2013-2014. The fiscal year 2013–2014 Engineer's Report maintains last year's assessment amount. The 2012-2013 assessment was increased 10% from the 2011–2012 rate after passage of a Proposition 218 vote, which had been put forward with the purpose of offsetting prior years' deficits.

In accordance with state law, joint notice of both the public meeting and the public hearing was mailed to all affected property owners and was posted at City Hall, Brisbane Community Center, Brisbane Public Library and Mission Blue Center. The preliminarily approved Engineer's Report is attached. As of June 11, 2013, no written protests had been received.

### **Discussion:**

In addition to the routine maintenance provided within the district, the revenue received funds special projects such as the replacement of the north and east shoreline Myoporum trees that fell victim to an invasive pest, the Klambo Thrip Myopori. Council received an overview of the investigation and the three year replacement plan with last year's Engineer's report. The chosen landscaping contractor will implement the third phase of replacements this fall.

### **Fiscal Impact:**

This is an annually occurring process that provides the funding mechanism for the work completed within the landscaping and lighting district. If the Council declines to order and levy the collection of assessments, there will be no identified revenue source for the work scheduled in this District.

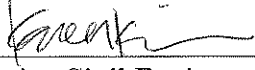
The FY 13-14 budget expected to be forwarded to Council by the City Manager for Department 4009 (Sierra Point Landscaping and Lighting District) is \$497,230. The assessments to be collected via the recommended action are \$591,776. The amount received in excess of the annual costs will be used to reimburse the city for unfunded expenses incurred in previous years.

### **Measure of Success:**

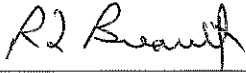
Continuing acceptable maintenance levels in the Sierra Point Landscape and Lighting District.

### **Attachments:**

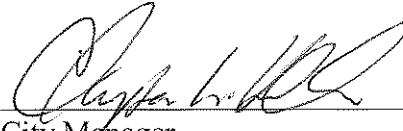
- A – Opening Statement by the Mayor of the City of Brisbane
- B – Clerk's Statement
- C – Engineer's Report, including Zone 1 and Zone 2 Assessment Diagrams
- Resolution No. 2013-18



Senior Civil Engineer



Director of Public Works/City Engineer



City Manager

**OPENING STATEMENT BY THE MAYOR  
OF THE CITY OF BRISBANE**

JUNE 17, 2013

**SIERRA POINT LANDSCAPING AND LIGHTING DISTRICT**

This is the time and place set for hearing on the Engineer's Report and the levy and collection of the proposed assessment for Fiscal Year 2013-2014 for the Sierra Point Landscaping and Lighting District. These proceedings were undertaken pursuant to the Landscaping and Lighting Act of 1972.

The Engineer's Report prepared by the Engineer of Work consists of the proposed improvements, the boundaries of the Assessment District and any zones therein, the proposed diagram, the estimate of cost thereof and the proposed assessments upon assessable lots and parcels of land within the District. Any one of these items may be the subject of protests or endorsements.

You are asked to clearly identify yourself and the property owned by you so that your statements may be correctly recorded.

The hearing is declared open and I will ask the City Clerk to report on the various notices given in connection with the hearing.

**ATTACHMENT A**

**CLERK'S STATEMENT**

JUNE 17, 2013

**SIERRA POINT  
LANDSCAPING AND LIGHTING DISTRICT**

Notices have been mailed and posted as required by the Landscaping and Lighting Act of 1972. Proofs of mailing and posting are on file in my office. A copy of the Engineer's Report prepared by the Engineer of Work was filed in my office on May 28, 2013, and has been open to public inspection since that time.

**ATTACHMENT B**

CITY OF BRISBANE

**SIERRA POINT**

**LANDSCAPING AND LIGHTING DISTRICT**

**ENGINEER'S REPORT**

on the  
Levy of an Assessment  
for the  
2013 - 2014 Fiscal Year

Prepared by

Karen Kinser, P.E.  
Senior Civil Engineer

May 28, 2013

ATTACHMENT C

I. BACKGROUND

In 1983, the Brisbane City Council determined to undertake proceedings under the provisions of Division 15, Part 2, of the California Streets and Highways Code, entitled “Landscaping and Lighting Act of 1972”, for the formation of an assessment district for the purpose of constructing, installing, maintaining and servicing the following facilities within said district:

- a) Public landscaping, including trees, shrubs, grass, other vegetation, and irrigation facilities.
- b) Public lighting facilities, including standards, poles, and electric current or energy.

The proposed district was designated the “Sierra Point Landscaping and Lighting District”.

This report was prepared pursuant to a City Council resolution ordering the engineer to prepare and file a report covering the 2013 - 2014 fiscal year.

II. PLANS AND SPECIFICATIONS

The original plans and specifications for the assessment district have been separately bound but are incorporated herein by this reference thereto.

III. ESTIMATE OF COSTS

The costs of this assessment district for the 2013 - 2014 fiscal year are estimated to be as follows:

**ZONE 1 & 2 CONSTRUCTION & MAINTENANCE**

|       |                                            | <b>FY 13/14</b>  |
|-------|--------------------------------------------|------------------|
|       | Employee salaries & fringes                | 53,907           |
| 54250 | Indirect costs                             | 114,452          |
|       | Maintenance & Servicing Costs (see detail) | 320,685          |
|       | Misc. Services & Supplies (see detail)     | 8,186            |
|       | Offset previous years deficits             | 94,546           |
|       | <b>TOTAL ZONE 1 &amp; 2</b>                | <b>\$591,776</b> |

**MAINTENANCE & SERVICING COSTS (Detail)**

|       |                                                | <b>FY 13/14</b>  |
|-------|------------------------------------------------|------------------|
| 52200 | Safety Clothing                                | 1,200            |
| 52231 | Gas & oil for vehicles                         | 5,136            |
|       | Mobile radio, field equip. repair & maint.     | 1,000            |
|       | Auto & truck repair & maintenance              | 4,030            |
|       | Tire & tire repair                             | 471              |
|       | Field equipment repair and maintenance         | 763              |
| 52232 | Contract turf maintenance                      | 36,540           |
|       | Gopher Control                                 | 12,000           |
|       | Pest Control - Myoporium replacement           | 20,000           |
|       | Tree trimming/replacement                      | 9,995            |
|       | Plants, shrubs and other vegetation            | 5,500            |
|       | Street light repair & maintenance              | 2,000            |
|       | Fertilizer, stakes, seed, compost              | 3,000            |
|       | Irrigation supplies                            | 4,000            |
| 52235 | Landscape beds contract maintenance            | 45,000           |
|       | Non-routine maintenance (planting, etc.)       | 16,850           |
| 52236 | Equipment rental                               | 3,000            |
| 52242 | Small tools and supplies                       | 200              |
| 52244 | Electricity and water                          | 150,000          |
|       | <b>Total Maintenance &amp; Servicing Costs</b> | <b>\$320,685</b> |



MISC. SERVICES & SUPPLIES (Detail)

|       |                                       | FY 13/14       |
|-------|---------------------------------------|----------------|
| 52233 | Memberships                           | 225            |
| 52221 | Communications                        | 500            |
| 52231 | Office equipment repair & maintenance | 600            |
| 52234 | Printing & forms                      | 200            |
| 52235 | Assessment Engineering                | 1,000          |
|       | Legal Counsel                         | 1,800          |
| 52243 | Travel and training                   | 100            |
| 51800 | Liability Insurance                   | 1,489          |
| 51810 | Worker's Compensation                 | 2,272          |
|       |                                       |                |
|       | Total misc. services & supplies       | <b>\$8,186</b> |

IV. DIAGRAM


The assessment diagrams for Zone 1 and 2 are attached hereto and are a part of this report.

V. ASSESSMENT

The assessments to be made against the assessable lots and parcels of land within this assessment district are attached hereto and are a part of this report.

Respectfully submitted,

Dated 5/28/13

  
 \_\_\_\_\_  
 Karen Kinser, P.E.  
 Senior Civil Engineer



Filed in the office of the City Clerk of the City of Brisbane, San Mateo County,  
California, this \_\_\_\_\_ day of \_\_\_\_\_, 2013.

---

Sheri Marie Spediacci  
City Clerk

Filed in the office of the County Controller-Auditor of the County of San Mateo,  
California, this \_\_\_\_\_ day of \_\_\_\_\_, 2013.

---

Bob Adler  
County Controller

## ASSESSMENT ROLL

| <u>ASSESSMENT<br/>NUMBER</u> | <u>ASSESSOR'S PARCEL<br/>NUMBER</u> | <u>PARCEL<br/>AREA, AC.</u> | <u>ASSESSMENT</u> |
|------------------------------|-------------------------------------|-----------------------------|-------------------|
| <u>ZONE 1</u>                |                                     |                             |                   |
| A 1                          | 007—165—010                         | 4.52                        | \$25,180          |
| A 2                          | 007—165—020                         | 8.87                        | 49,414            |
| A 3                          | 007—165—110                         | 3.44                        | 19,164            |
| A 4                          | 007—165—050                         | 6.13                        | 34,148            |
| A 5                          | 007—164—020                         | 5.66                        | 31,530            |
| A 6                          | 007—164—010                         | 10.20                       | 56,823            |
| A 7                          | 007—165—080                         | 5.78                        | 32,200            |
| A 8                          | 007—165—090                         | 9.09                        | 50,640            |
| A 9                          | 007—165—100                         | 7.98                        | 44,455            |
| A 10                         | 007—163—030                         | 3.52                        | 19,609            |
| A 11                         | 007—163—040                         | 3.08                        | 17,158            |
| A 12                         | 007—165—120                         | 4.56                        | 25,404            |
| C 1                          | 015—010—530                         | Note <sup>1</sup>           | 0                 |
| C 2                          | 015—010—560                         | 6.92                        | 38,551            |
| C 3                          | 015—010—570                         | 8.57                        | 47,742            |
| C 4                          | 015—010—580                         | 8.56                        | 47,686            |
| C 5                          | 015—010—610                         | 2.41                        | 13,427            |
|                              | Subtotals                           | 99.29                       | \$553,131         |

---

<sup>1</sup> Although previously assessed, this parcel is owned by California State Lands Commission, which is exempt from local assessments.

ZONE 2

|     |                         |                   |           |
|-----|-------------------------|-------------------|-----------|
| B 1 | None (placeholder only) |                   | -0-       |
| B 2 | 005—162—430 (Ptn)       | 15.2              | 7,189     |
| B 3 | 005—162—300             | 66.5              | 31,456    |
| B 4 | 005—162—400 (Ptn)       | Note <sup>2</sup> | -0-       |
| B 5 | 005—162—410 (Ptn)       | 0.2 <sup>3</sup>  | -0-       |
| B 6 | 005—162—390             | Note <sup>4</sup> | -0-       |
| B 7 | 005—162—420 (Ptn)       | Note <sup>4</sup> | -0-       |
|     | Subtotals               | 81.7              | \$ 38,645 |
|     | Totals                  | 180.99            | \$591,776 |

---

<sup>2</sup> This portion of this parcel is private land over which the public has been granted access for use as the street, Tunnel Avenue.

<sup>3</sup> No assessment has been imposed for a value less than \$100.

<sup>4</sup> B6 and B7 are publicly owned portions of Tunnel Avenue.

## **METHOD OF ASSESSMENT SPREAD**

The amounts to be assessed against the parcels of property to pay the costs and expenses of the work and improvements shall be based on the estimated benefits to be derived by the various properties within the assessment district.

Construction and maintenance costs shall be segregated by zone, then spread to the parcels within each zone in proportion to the area of the benefited parcels within the zone.

Incidental expenses shall be spread proportional to the area of benefited parcels within the assessment district.

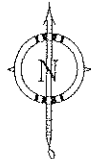
Due to the County Auditor's requirement that individual parcel assessments be rounded to the nearest even cent, the total of said individual assessments may not exactly equal the total estimate of costs.

## NAMES AND ADDRESSES OF OWNERS

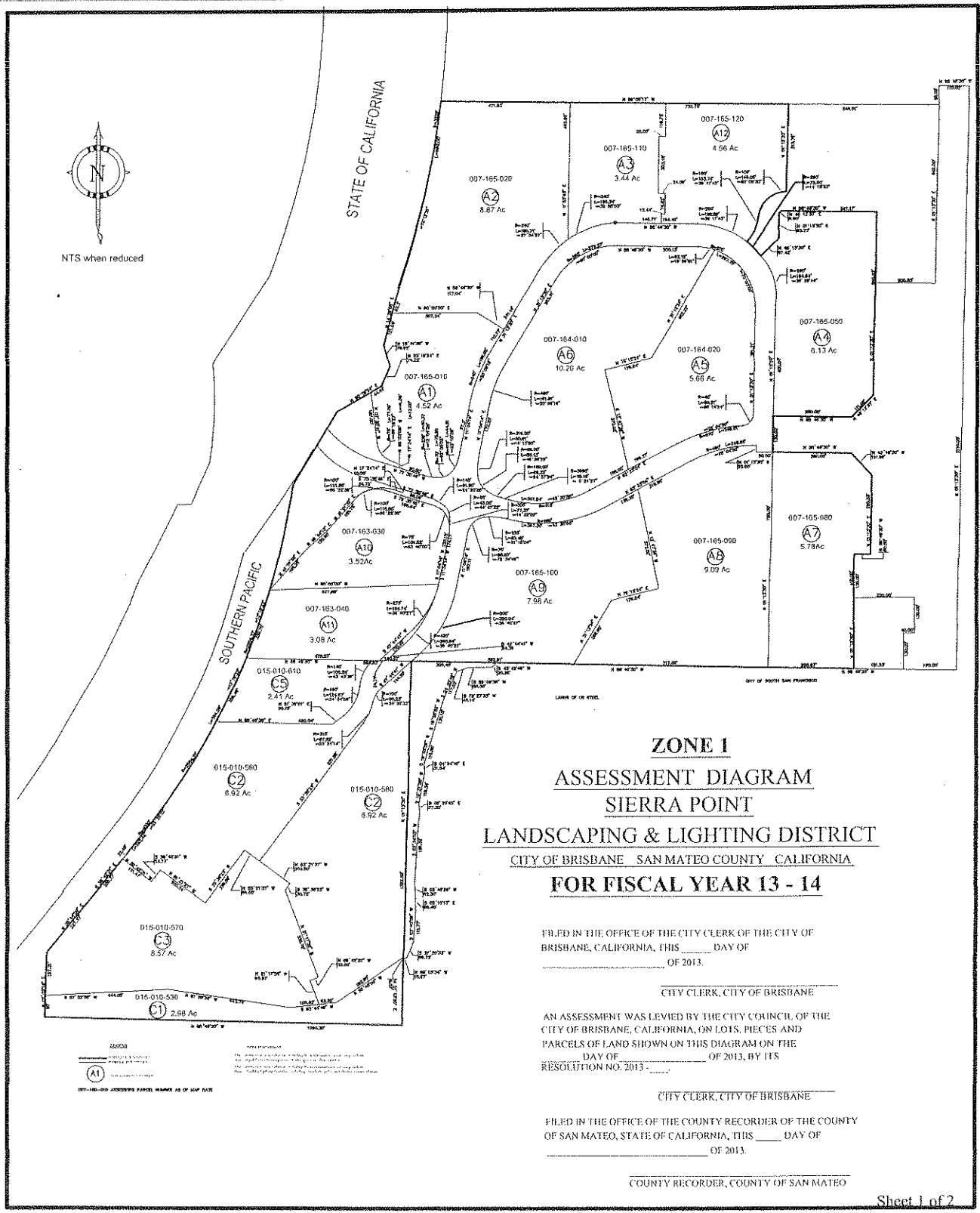
| <u>ASSESSMENT<br/>NUMBER</u> | <u>ASSESSEE</u>                                                                                                                       |
|------------------------------|---------------------------------------------------------------------------------------------------------------------------------------|
| A 1                          | Fund Viii 1000 Marina LLC<br>Attn: TA Associates Realty<br>1301 Dove St., Ste. 860<br>Newport Beach, CA 92660                         |
| A 2                          | Sierra Point LLC<br>C/O Opus<br>10350 Bren Rd. West<br>Minnetonka, MN 55343-9014                                                      |
| A 5                          | Diamond Marina LLC<br>2000 Sierra Point Parkway #100<br>Brisbane, CA 94005                                                            |
| A 3<br>A12                   | Sri Seven Marina LLC<br>c/o Shorenstein Prop LLC<br>235 Montgomery St., 16 <sup>th</sup> Floor<br>San Francisco, CA 94104             |
|                              | Dmarc 2006 Cd2<br>Marina Office LP<br>1601 Washington Ave. Ste. 700<br>Miami Beach, FL 33139                                          |
| A 4                          | Tuntex Properties, Inc.<br>150 Executive Park Blvd. #4200<br>San Francisco, CA 94134                                                  |
| A 6                          | 2000 Sierra Point Parkway LLC<br>Attn: Diamond Investment Properties, Inc.<br>2000 Sierra Point Pkwy., Ste. 100<br>Brisbane, CA 94005 |
| A7<br>A8<br>A9               | Slough Brisbane LLC<br>PO Box 847<br>Carlsbad, CA 92018                                                                               |
| A 10                         | Brisbane Lodging LP<br>5000 Sierra Point Parkway<br>Brisbane, CA 94005                                                                |
| A 11                         | CPI Sage Hotels Brisbane Owner LLC                                                                                                    |

Attn: Shanna Lehman  
PO Box 847  
Carlsbad, CA 92018

- B 2 Oyster Point Properties, Inc.  
B 3 c/o Tuntex Properties, Inc.  
B 4 150 Executive Park Blvd. #4200  
B 5 San Francisco, CA 94134-3332
- B 6 City of Brisbane  
B 7 50 Park Place  
Brisbane, CA 94005
- C 1 State of California  
C/O State Lands Commission  
Attn: Title Unit  
100 Howe Ave., Ste. 100  
Sacramento, CA 95825
- C 2 OIK Sierra Point LLC  
C/O Real Estate Capital Partners  
Attn: Michael Fruchtman  
114 W 47<sup>th</sup> St. 23<sup>rd</sup> Floor  
New York, NY 10036
- C 3 ARE San Francisco No. 17 LLC  
C/O Deloitte & Touche  
Attn: Shanna Lehman  
PO Box 847  
Carlsbad, CA 92018
- C 4 Areus Inc.  
5000 Shoreline Ct.  
South San Francisco, CA 94080
- C 5 Sierra Point Ten LP  
C/O Tim Fritz  
3500 American Blvd.  
Bloomington, MN 55431



NTS when reduced



**ZONE 1**  
**ASSESSMENT DIAGRAM**  
**SIERRA POINT**  
**LANDSCAPING & LIGHTING DISTRICT**  
**CITY OF BRISBANE SAN MATEO COUNTY CALIFORNIA**  
**FOR FISCAL YEAR 13 - 14**

FILED IN THE OFFICE OF THE CITY CLERK OF THE CITY OF  
BRISBANE, CALIFORNIA, THIS \_\_\_\_ DAY OF  
\_\_\_\_ OF 2013.

CITY CLERK, CITY OF BRISBANE

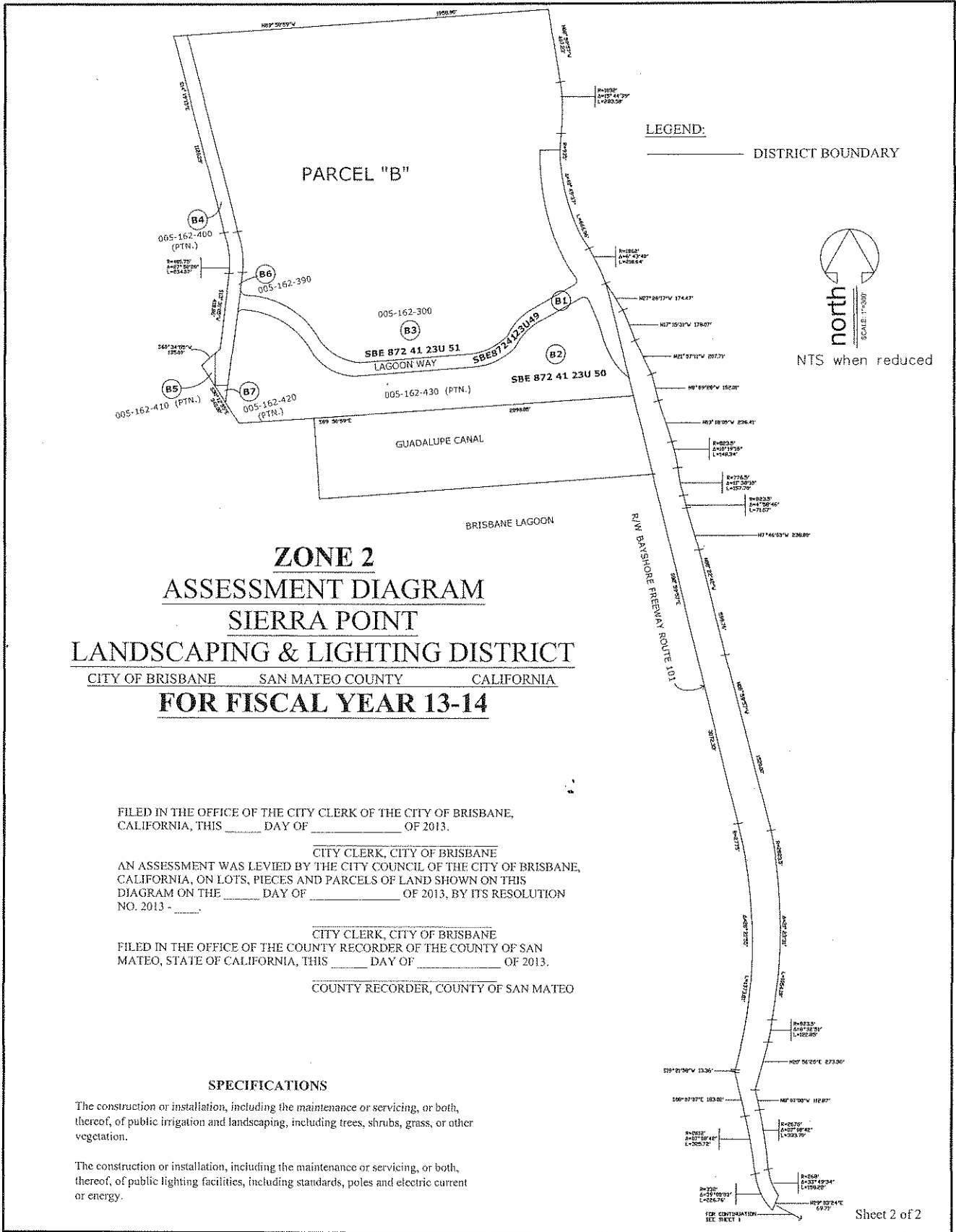
AN ASSESSMENT WAS LEVIED BY THE CITY COUNCIL OF THE  
CITY OF BRISBANE, CALIFORNIA, ON LOTS, PIECES AND  
PARCELS OF LAND SHOWN ON THIS DIAGRAM ON THE  
\_\_\_\_ DAY OF \_\_\_\_ OF 2013, BY ITS  
RESOLUTION NO. 2013 - \_\_\_\_.

CITY CLERK, CITY OF BRISBANE

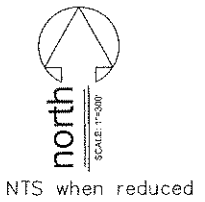
FILED IN THE OFFICE OF THE COUNTY RECORDER OF THE COUNTY  
OF SAN MATEO, STATE OF CALIFORNIA, THIS \_\_\_\_ DAY OF  
\_\_\_\_ OF 2013.

COUNTY RECORDER, COUNTY OF SAN MATEO





**LEGEND:**  
 \_\_\_\_\_ DISTRICT BOUNDARY



**ZONE 2**  
**ASSESSMENT DIAGRAM**  
**SIERRA POINT**  
**LANDSCAPING & LIGHTING DISTRICT**  
 CITY OF BRISBANE SAN MATEO COUNTY CALIFORNIA  
**FOR FISCAL YEAR 13-14**

FILED IN THE OFFICE OF THE CITY CLERK OF THE CITY OF BRISBANE, CALIFORNIA, THIS \_\_\_\_\_ DAY OF \_\_\_\_\_ OF 2013.

CITY CLERK, CITY OF BRISBANE

AN ASSESSMENT WAS LEVIED BY THE CITY COUNCIL OF THE CITY OF BRISBANE, CALIFORNIA, ON LOTS, PIECES AND PARCELS OF LAND SHOWN ON THIS DIAGRAM ON THE \_\_\_\_\_ DAY OF \_\_\_\_\_ OF 2013, BY ITS RESOLUTION NO. 2013 - \_\_\_\_\_.

CITY CLERK, CITY OF BRISBANE

FILED IN THE OFFICE OF THE COUNTY RECORDER OF THE COUNTY OF SAN MATEO, STATE OF CALIFORNIA, THIS \_\_\_\_\_ DAY OF \_\_\_\_\_ OF 2013.

COUNTY RECORDER, COUNTY OF SAN MATEO

**SPECIFICATIONS**

The construction or installation, including the maintenance or servicing, or both, thereof, of public irrigation and landscaping, including trees, shrubs, grass, or other vegetation.

The construction or installation, including the maintenance or servicing, or both, thereof, of public lighting facilities, including standards, poles and electric current or energy.

**RESOLUTION NO. 2013-18**

**A RESOLUTION OVERRULING PROTESTS AND ORDERING THE  
IMPROVEMENTS AND CONFIRMING THE DIAGRAM AND ASSESSMENTS**

**FISCAL YEAR 2013-2014**

**SIERRA POINT  
LANDSCAPING AND LIGHTING DISTRICT**

**RESOLVED**, by the City Council of the City of Brisbane, California, as follows:

**WHEREAS**, on the 6th day of May, 2013 said Council adopted its Resolution No. 2013-10, Describing Improvements and Directing Preparation of Engineer's Report for Fiscal Year 2013-2014 for the Sierra Point Landscaping and Lighting District Pursuant to the Landscaping and Lighting Act of 1972, and directed the Engineer of Record to prepare and file with the Clerk of this City a written report called for under said Act and by said Resolution No. 2013-10;

**WHEREAS**, said report was duly made and filed with the Clerk of said City, whereupon said Clerk presented it to the City Council for its consideration;

**WHEREAS**, said Council thereupon duly considered said report and each and every part thereof and found that it contained all the matters and things called for by the provisions of said Act and said Resolution No. 2013-10, including (1) plans and specifications of the existing improvements and the proposed new improvements; (2) estimate of costs; (3) diagram of the District; and (4) an assessment according to benefits; all of which were done in the form and manner required by said Act;

**WHEREAS**, said Council found that said report and each and every part thereof was sufficient in every particular detail and determined that it should stand as the report for all subsequent proceedings under said Act, whereupon said Council pursuant to the requirements of said Act, appointed Monday, the 17th day of June, 2013, at the hour of 7:30 p.m. of said day in the Brisbane Community Meeting Room, 50 Park Place, Brisbane, California, 94005 as the time and place for hearing protests in relation to the levy and collection of the proposed assessments for said improvements, including the maintenance or servicing, or both, thereof, for Fiscal Year 2013-2014 and directing said Clerk to give notice of said hearing as required by said Act;

**WHEREAS**, it appears that notices of said hearing were duly and regularly mailed, published and posted in the time, form and manner required by said Act, as evidenced by the Affidavits and Certificates on file with said Clerk, whereupon said hearing was duly and regularly held at the time and place stated in said notice;

**WHEREAS**, persons interested, objecting to said improvements, including the maintenance or servicing, or both, thereof, or to the extent of the assessment district, or any zones therein, or to the proposed assessment or diagram or to the Engineer's estimate of costs thereof, filed written protests with the Clerk of said City at or before the conclusion of said hearing, and

all persons interested desiring to be heard were given an opportunity to be heard, and all matters and things were pertaining to the levy and collection of the assessments for said improvements, including the maintenance or servicing, or both, thereof, were fully heard and considered by said Council; and

**NOW, THEREFORE, IT IS HEREBY FOUND, DETERMINED and ORDERED**, as follows:

1. That protests against said improvements, including the maintenance or servicing, or both, thereof, or to the extent of the assessment district or any zones therein, or to the proposed assessment or diagram, or to the Engineer's estimate of costs thereof, for Fiscal Year 2013-2014 be, and each of them are, hereby overruled.

2. That the public interest, convenience and necessity require and said Council does hereby order the levy and collection of assessments pursuant to said Act, for the construction or installation of the improvements, including the maintenance or servicing, or both, thereof, more particularly described in said Engineer's Report and made a part hereof by reference thereto.

3. That the Sierra Point Landscaping and Lighting District and the boundaries thereof benefited and to be assessed for said costs for the construction or installation of the improvements, including the maintenance or servicing, or both, thereof, are more particularly described by reference to a map thereof on file in the Office of the Clerk of said City. Said map indicates by a boundary line the extent of the territory included in said district and of any zone thereof and the general location of said District.

4. That the plans and specifications for the existing improvements and for the proposed improvements to be made within the assessment district or within any zone thereof contained in said report, be, and they are, hereby finally adopted and approved.

5. That the Engineer's estimate of the itemized and total costs and expenses of said improvements, maintenance and servicing thereof, and of the incidental expenses in connection therewith, contained in said report, be, and it is hereby, finally adopted and approved.

6. That the public interest and convenience require, and said Council does hereby order the improvements to be made as described in and in accordance with said Engineer's Report, reference to which is hereby made for a more particular description of said improvements.

7. That the diagram showing the exterior boundaries of the assessment district referred to and described in said Resolution No. 2013-10, and also the boundaries of any zones therein and the lines and dimensions of each lot or parcel of land within said District as such lot or parcel of land is shown on the County Assessor's maps for the fiscal year to which it applies, each of which lot or parcel of land has been given a separate number upon said diagram, as contained in said report, be, and it is hereby, finally approved and confirmed.

8. That the assessment of the total amount of the costs and expenses of the said improvements upon the several lots or parcels of land in said District in proportion to the

estimated benefits to be received by such lots or parcels, respectively, from said improvements, and the maintenance or servicing, or both, thereof and of the expenses incidental thereto contained in said report be, and the same is hereby, finally approved and confirmed.

9. That said Engineer's Report for Fiscal Year 2013-2014 be, and the same is, hereby finally adopted and approved as a whole.

10. That the City Clerk shall forthwith file with the Auditor of San Mateo County the said assessment, together with said diagram thereto attached and made a part thereof, as confirmed by the City Council, with the certificate of such confirmation thereto attached and of the date thereof.

11. That the order for the levy and collection of assessment for the improvements and the final adoption and approval of the Engineer's Report as a whole, and of the plans and specifications, estimate of the costs and expenses, the diagram and the assessment, as contained in said Report, as modified, as hereinabove determined and ordered, is intended to and shall refer and apply to said Report, or any portion thereof, as amended, modified, revised or corrected by, or pursuant to and in accordance with any resolution or order, if any, heretofore duly adopted or made by this Council.

12. That the San Mateo County Controller and the San Mateo County Tax Collector apply the Sierra Point Landscaping and Lighting District assessments to the tax roll and have the San Mateo County Tax Collector collect said assessments in the manner and form as with all other such assessments collected by the San Mateo County Tax Collector.

---

Raymond C. Miller  
Mayor

I, the undersigned, hereby certify that the foregoing Resolution No. 2013-18, was adopted by the City Council of the City of Brisbane, at a regular meeting thereof held on the 17th day of June, 2013, by the following roll call vote:

AYES:  
NOES:  
ABSENT:

---

Sheri Marie Spediacci  
City Clerk